



STEAM PLANET
LUXURY STEAM SHOWER

Installation Manual

WP-401



Please read this manual carefully before use.

Important Safety Instructions:



Warning!

- Use this unit only for its intended purposes or as described in this manual. Use only attachments recommended by the manufacturer.
- Risk of hyperthermia. Water temperature in excess of 38°C (104°F) may be injurious to your health. Check and adjust temperature before use.
- Children must be supervised while using this product.
- Danger: To reduce the risk of injury, do not permit children or persons with infirmities to use this product unless they are closely supervised at all times.
- All units must be water tested before installation.

Unpacking the Unit

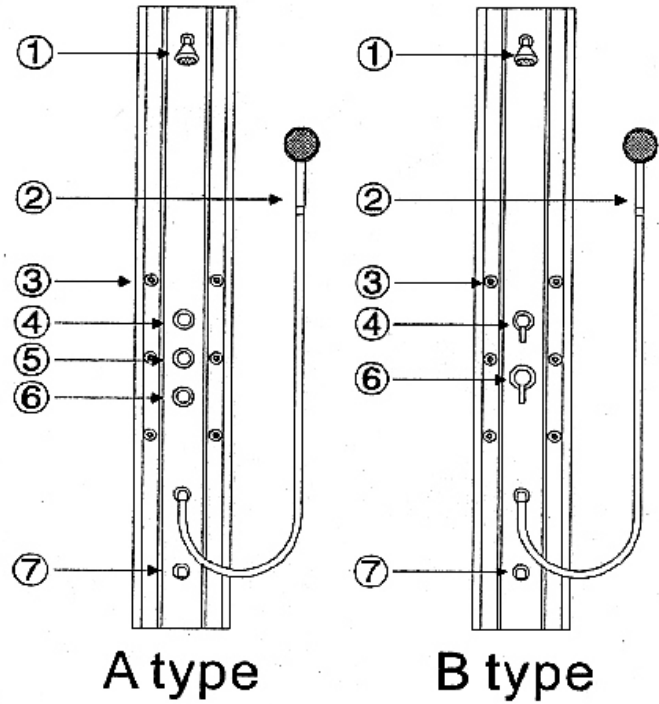
1. Inspect the carton, if carton damage is noted: take a picture if possible, notify the manufacturer.
2. Immediately inspect the unit for damage even if there is no carton damage. Once the unit is installed surface damages will be assumed to be installation related if not reported at this point. Installers are responsible for damage that occurs once the unit is placed in its niche.
3. Inspect the plumbing for any loose fittings.

Product Description

1. Wall-hung multi jet shower panel.
2. Vitamin C (VC) shower

Parts Information

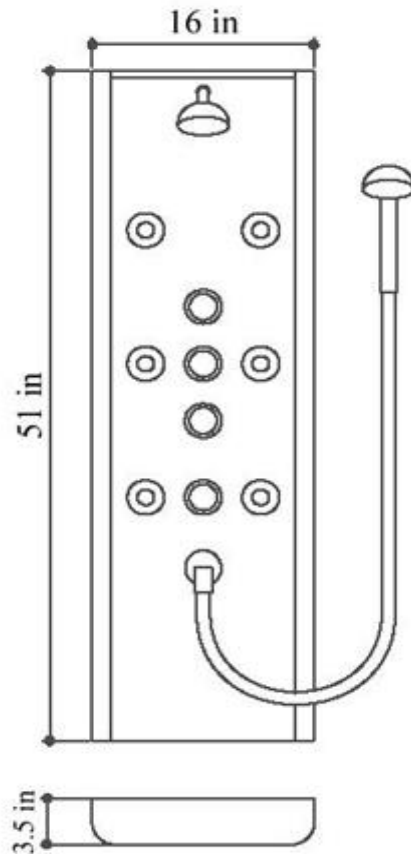
1. Shower Head
2. Hand-held Shower
3. Jets
4. Function Diverter (shower head, hand-held, or jets)
5. Vitamin C (VC) Reservoir
6. Cold / Hot Water Manifold
7. Tub Filler



A type

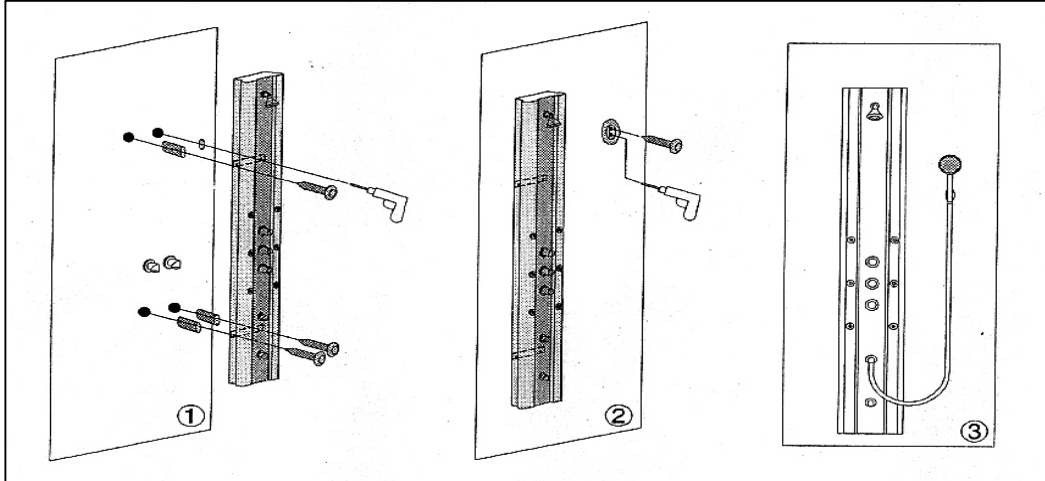
B type

Product Diagram

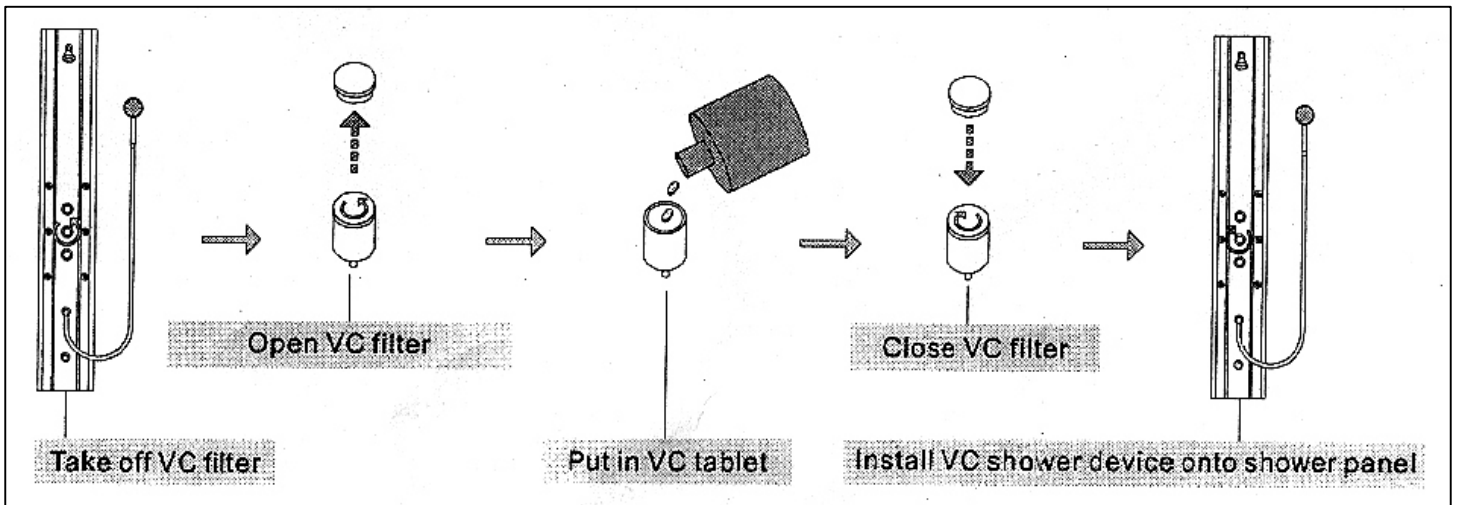


Installation Instructions

1. Drill $\Phi 9$ hole according to installation location of the product. (Note: Water supply does not affect installation.) Get water pipes connected and the shower panel hung via screws (see diagram below)
2. Install hand-held shower holder in the same way.
3. Connect hand-held shower to the main panel.



Vitamin C Reservoir



*If there are other questions, please call Technical Support at 866-783-2661